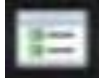
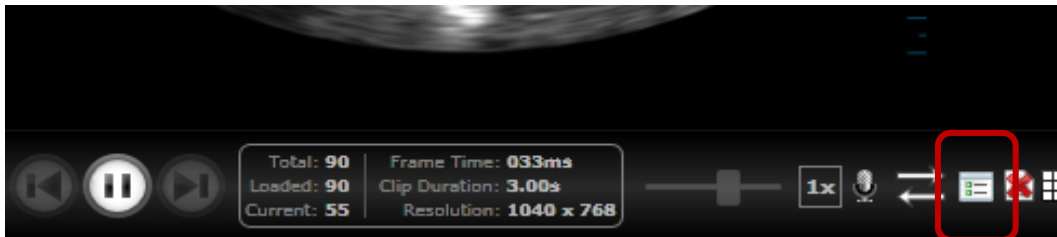


IMAGE MAGNIFICATION, ANNOTATION, & BRIGHTNESS/CONTRAST:

The image toolbar (located below the full sized image on both the Images/Worksheet & Images screens) provides tools, controls, & options to annotate, change brightness/contrast, & magnify the image.

Open (close) Image Toolbar:

1. Select the toolbar icon at the  bottom of main image field to open/close image toolbar.



Tips:

- ❖ If the image toolbar icon is not visible below the full sized image, decrease the size of the full sized image until the controls appear. (Drag the right border of the full sized image)
- ❖ Hover mouse over icons to display tool/control function.

Image Tools:



Enter text on image



Place an arrow on image



Hide current annotation on image



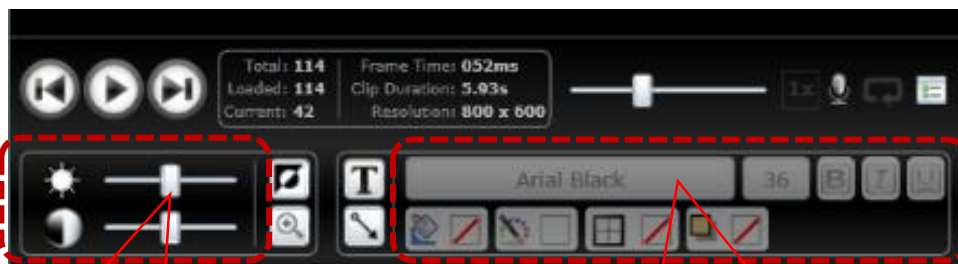
Opens magnify tool



Show current annotation on image



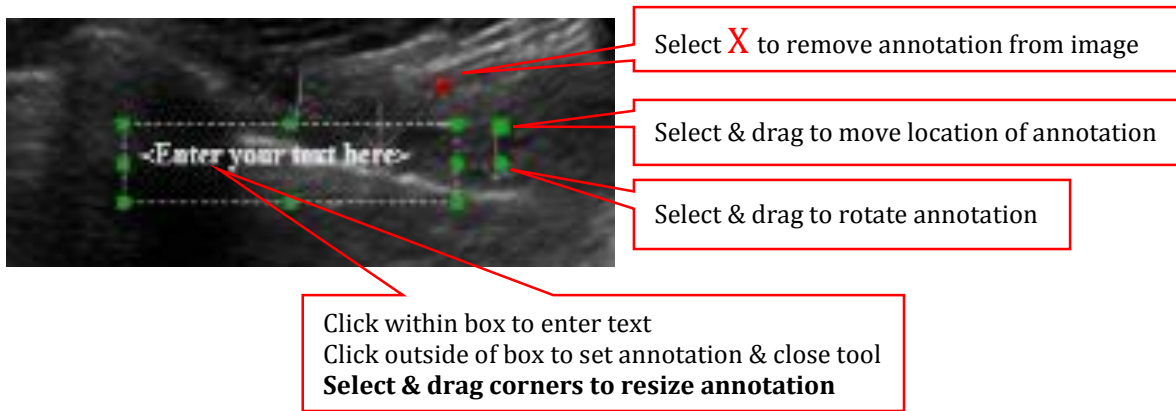
Record an audio clip
(requires a microphone)



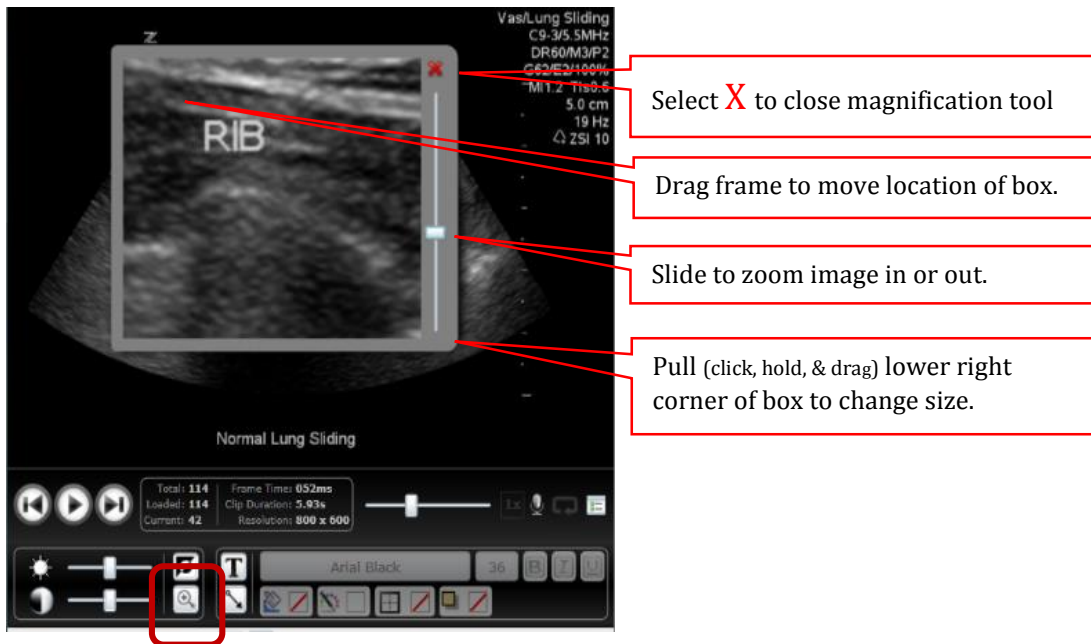
Slide to adjust image
Brightness & Contrast

Annotation Tools:
Font, Arrow, Type, Size, & Color

Annotation Adjustments (Text & Arrow):



Magnification Tool:



- ❖ A complete Q-path User Manual is located under the Support tab within your Q-path application